



Angel India Cad Cam Pvt. Ltd.



Angel India Cad Cam Pvt. Ltd.

Features

- Steel plate welded structure, hydraulic transmission, nitrogen cylinder return
- Easy operation, reliable performance, beautiful appearance
- The blade gap adjustment has a sign indication, the stepless adjustment is light and rapid
- It has a light alignment device and can adjust the stroke of the top blade holder steplessly.
- With hydraulic and electrical overload protection
- Rolling material support ball will reduce the scratch and frictions as well
- Adopt safety protection fence for the safety of workers
- Straightness: $\pm 0.10\text{mm}$ for 3m plate cutting
- Blade material: 6CrW2Si
- Heat treatment: 55°-60°HB
- Low noise (70bd), gear pump drive by hydraulic
- E21s, E200PS, DAC310S CNC system can be selected

Angel India Cad Cam Pvt. Ltd.

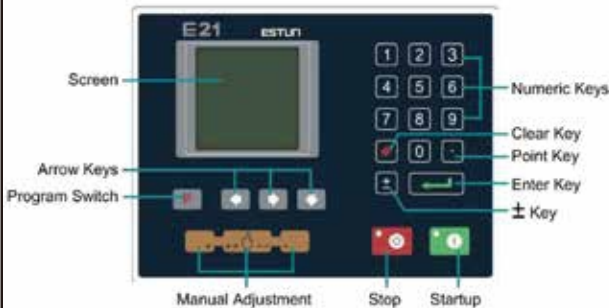
Parameter

	Max thickness(mm)		Cutting Length (mm)	Throat Depth (mm)	Blade Length (mm)	Blade Length (mm)	Shearing Speed (Cuts/min)	Back Gauge Specification		Front Holder Quantity		Motor Power (kw)	Oli Tank Capacity (L)	Weight (kg)	L*w*h (mm)
	< 450N/m ²	< 700N/mm ²						Travel (mm)	Speed (mm/sec)	Number (Pcs)	Length (mm)				
4×2500	4	2.5	2500	100	1°30'	2600	10~12	600	180	3	800	5.5	220	3800	3040*1610*1620
4×3200	4	2.5	3200	100	1°30'	3300	10~12	600	180	3	800	5.5	290	5000	3840*1610*1620
4×4000	4	2.5	4000	100	1°30'	4100	8~10	600	180	4	800	5.5	290	6500	6460*2100*3200
4×6000	4	2.5	6000	100	1°30'	6100	5~7	600	180	6	800	11	380	11000	6460*2100*3200
Type 6×2500	6	4	2500	145	1°30'	2600	10~12	600	180	3	800	7.5	220	5000	3040*1610*1620
6×3200	6	4	3200	145	1°30'	3300	9~11	600	180	3	800	7.5	290	6000	3840*1610*1620
6×4000	6	4	4000	145	1°30'	4100	8~10	600	180	4	800	7.5	290	8000	4620*1750*1700
6×6000	6	4	6000	145	1°30'	6100	5~7	600	180	6	800	11	380	16500	6480*2100*2300
8×2500	8	5	2500	300	1°30'	2600	10~12	600	180	3	800	7.5	220	6000	3040*1700*1700
8×3200	8	5	3200	300	1°30'	3300	8~10	600	180	3	800	7.5	290	7200	3860*1700*1700
8×4000	8	5	4000	300	1°30'	4100	8~10	600	180	4	800	7.5	290	8800	4640*1700*1700
8×5000	8	5	5000	300	1°30'	5100	8~10	600	180	5	800	7.5	380	11500	5400*2400*2000
8×6000	8	5	6000	300	1°30'	6100	8~10	600	180	6	800	11	380	18000	6480*2100*2350
10×2500	10	6.5	2500	300	1°30'	2600	9~11	600	180	3	800	11	320	7300	3040*1700*1700
10×3200	10	6.5	3200	300	1°30'	3300	9~11	600	180	3	800	11	420	8000	3860*1700*1700
10×4000	10	6.5	4000	300	1°30'	4100	8~10	600	180	4	800	11	420	12000	4650*2100*2000
10×6000	10	6.5	6000	300	2°	6100	5~7	600	180	6	800	15	520	24000	6500*2100*2300

Angel India Cad Cam Pvt. Ltd.

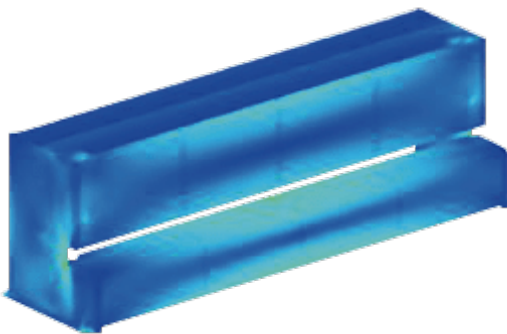
No.	Name	Model Manufacturer	Configuration
1	CNC system	E21S NC System Estun	Standard
2	Electrics	Schneider Electric-France Travel switch&Limit Switch	
3	Main Motor	Siemens Motor-Germany	
4	Back Stopper,Timing Belt,Timing Pulley	Taiwan Positioning Control Guaranteed Precision	
5	Frequency Converter	DELTA -Taiwan positioning Control / Guaranteed Precision	
6	Oil Pump	Sunny -USA	
7	Pedal Switch	Kacon-South Korea	
8	Hydraulic System	Bosch Rexroth-Gemany	
9	Sealing Ring	PARKER-America/NOK-Japan	
10	Oil Tube Connector	EMB-Gemany	
11	Front Safeguard	Produced by Machnist	
12	Back Safeguard	Produced by Machnist	
13	Die	One Set of standard Dies	
14	Backguage	Ball Screw & Liner Guide Rail-China	
15	Back Pneumatic Support	Produced by Machnist	Optional
16	Before-Cutting Feeder	Produced by Machnist	
17	Front Photoelectricity Protection	China	
18	Back Photoelectricity Protection	China	
19	Backguage	Ball Screw & Liner Guide Rail-Taiwan,HIWIN	
20	Safety Standard	☐CE ☐CSA ☐NR-12 ☐OSHA	

NC Controller



- High-definition hydraulic display
- Control common motors and frequency converters
- X-axis intelligent positioning
- Multi-step programming, 40 programs, each program 25 steps
- Built-in time relay function
- One-button function switching
- Unilateral positioning function
- A key backup and restore of parameters
- Chinese and English
- Metric system

Machine Bed Stress & Finite Element Analysis



The CAE software SolidWorks analyzes the linear static construction, stress, and deformation for press breaks and laser-cutting machine frames. So FEA makes sense for complicated structures, highly complex loading, transient modeling, and a combination of the above.

Swing shearing machine



The upper blade penetrates the metal sheet above the lower edge. A pivoting movement cuts the swing beam. After the amount is made, the upper blade moves away from the lower blade. The upper knife moves away from the lower edge after cutting. The upper and lower blade do not rub on each other. A pivoting movement cuts the swing beam. After the amount is made, the upper edge moves away from the lower blade. The blade clearance can be easily adjusted by turning the cutting gap eccentric. The upper edge moves away from the lower blade after cutting. The upper and lower blade do not rub on each other. Swing beam cutting requires a riding shear design. The reason is the low rake angle, which is the fix for any material thickness.

Angel India Cad Cam Pvt. Ltd.

Standard Specification



Siemens motor – class IE3



Press Cylinder



EMB Oil Fitting -Germany



Shearing Blade



Manual Knife Clearance



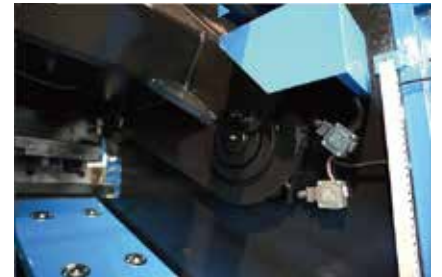
Foot Pedal



Rexroth Valve



Worktable



Knife adjust



Ball Screw



Sunny Oil Pump



Lying table , Back Protection

Angel India Cad Cam Pvt. Ltd.

Machine Display

